

MT2

Woodpecker
Dental Electric Motor

Refined trimming
Faster tooth preparation
More powerful crown-splitting



Imported German bearing
Low vibration enables
more precise tooth preparation

Imported German bearing
Stable and precise cutting
Guarantee stable speed and torque output



High performance brushless motor
with greater torque and lower noise

Lower noise and faster tooth preparation.
Low abrasion, low heat generation and longer service life.



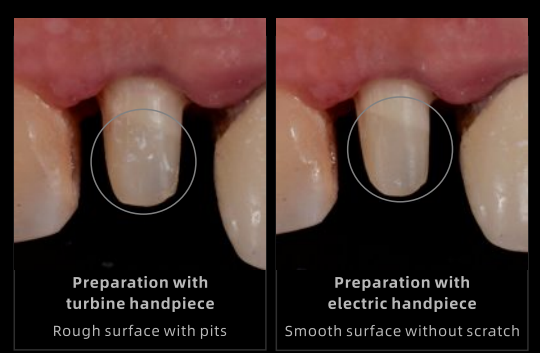
Four-hole water spray

Concentrated water output, better cooling effect.
Stable output effectively reduces aerosol,
ensuring safer treatment environment.



One button control

More convenient and easier operation



Minimally invasive repairing
precise teeth preparation

Compared with turbine handpiece, it has larger
clamping force and can grasp the bur tighter.
Effectively improve the precision
of trimming and tooth preparation.