

SPEED, QUALITY, PREDICTABILITY
NO COMPROMISE

Smart X



- SMART FOCUS MODE
- COMPRESSED SENSING TECHNOLOGY
- HIGHEST RESOLUTION WITH 0.05mm
VOXEL SIZE
- FASTEST SCAN TIME

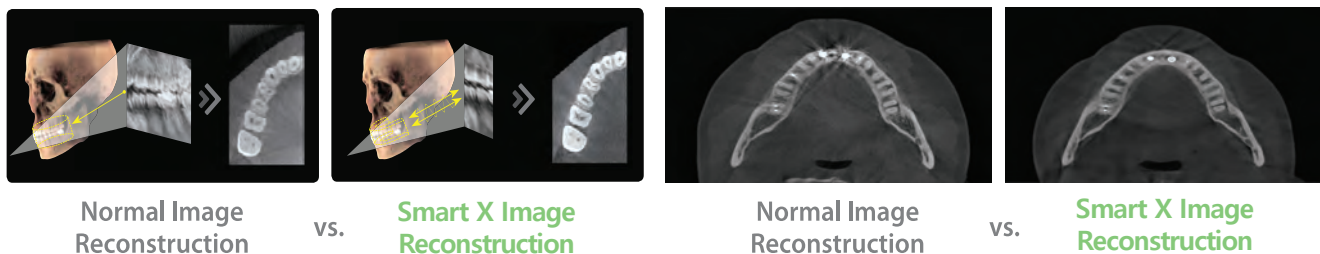
49.5 μ m
CMOS
Sensor

SMART FOCUS MODE

Comprehensive planning for complex cases in one go. Smart Focus is a revolutionary technology that captures 5 high-resolution images in just one scan. Whether new patients or complex cases, multiple images obtained from a single scan allow comprehensive treatment planning.

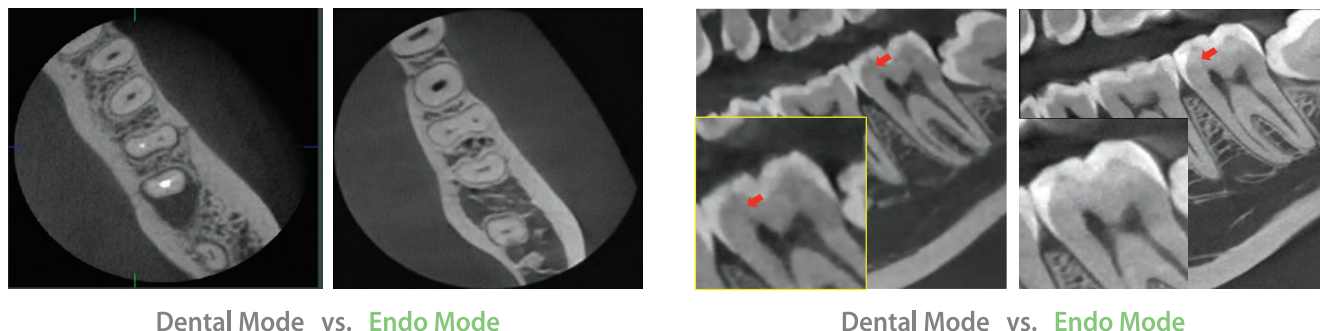
COMPRESSED SENSING TECHNOLOGY

Vatech dramatically improves its image quality with much less artefact and noise via its Compressed Sensing Technology (CST), iterating its reconstruction process 10 times more than the normal amount to depict the object's true representation.



ENDO MODE WITH HIGH RESOLUTION

With its 4cm x 4cm volume mode and 50 micron voxel size, the endo mode will optimise treatment of highly-focused regions of interest. It is ideal for endodontic use because the dentist is able to achieve an extraordinary image in a high-resolution voxel size.



MULTI FOV SELECTION

The Smart X offers a range of selectable fields of view. The Multi FOV option allows users to select the optimum FOV mode while minimising exposure to areas that are not in the region of interest. The selection includes the following FOV sizes for diagnostic needs: 12x14, 12x8.5, 8x8, 8x5, and 4x4. These options cover the full arch region, sinus and left/right TMJ, and suits most oral surgery cases and multiple implant surgeries.

GREEN SCAN TIME

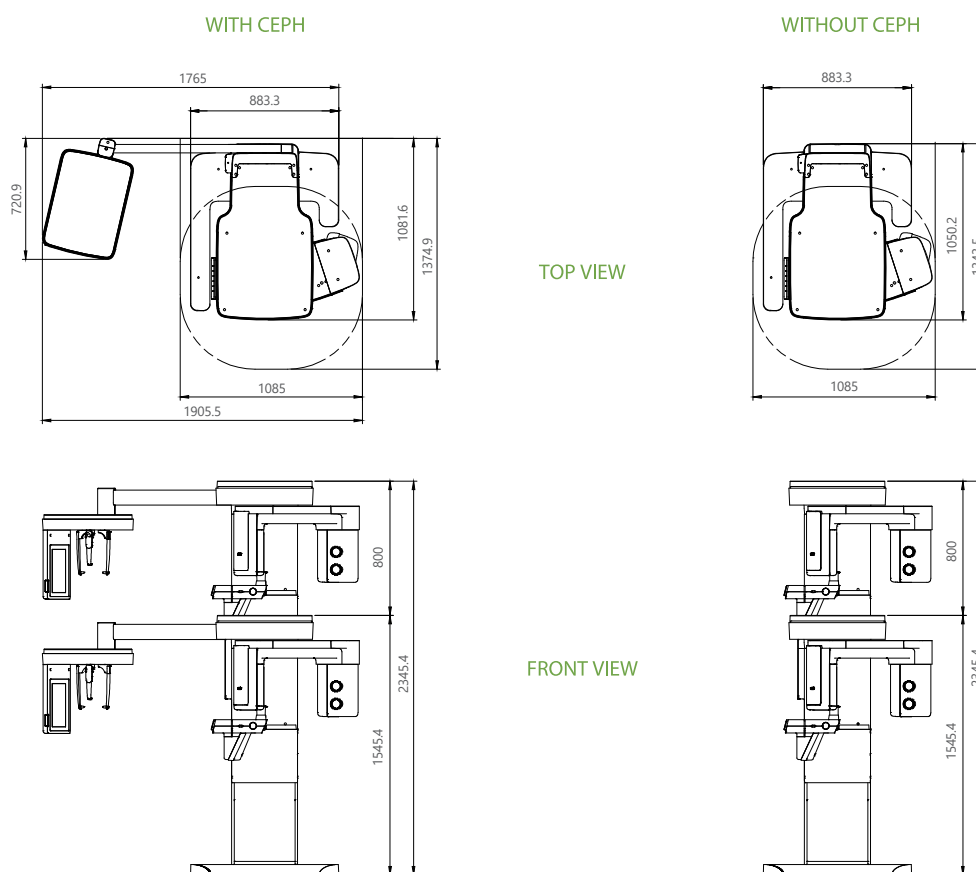
Due to its scan time, the Smart X minimises motion artefact and enables faster workflow. It produces superb diagnostic images, which will be a source of pride for any dental practice. Focusing on the highest quality of patient care, Vatech Strives to improve the health and safety of your patients.

SPECIFICATIONS [Smart X : PHT-75CHS]

| | | |
|------------------------|--|--|
| Function | CT + Pano + Ceph + Model Scan | |
| Focal Spot Size | 0.5 mm (IEC 60336) | |
| CT FOV Size | Endo(4x4), 8x5, 8x8, 12x8.5, Smart Focus, Double Scan(12x14) | |
| Voxel Size | 4x4 | 0.05 mm |
| | 8x5 / 8x8 | 0.12 mm / 0.2 mm |
| | 2x8.5 / Double Scan / Smart Focus | 0.2 mm / 0.3 mm / 0.07mm |
| Scan Time | Pano | 4.0 sec / 14.1 sec |
| | Ceph | 1.9 sec / 4.9 sec |
| | CBCT | 10.0 sec (8x5- 8x8) 15.5 sec (12x8.5, Smart Focus, Double Scan) 13.0 sec (Endo) |
| Gray Scale | 14 Bit | |
| Tube Voltage / Current | 60 - 99 kVp / 4 - 16 mA | |
| Weight | Without CEPH unit | 359.13 lbs-without Base |
| | | 480.38 lbs-with Base |
| | With CEPH unit | 414.25 lbs-without Base |
| | | 535.50 lbs-with Base |
| Dimensions | With CEPH unit | 75.02"(L) x 57.39"(W) x 91.24"(H)- withoutBase |
| | | 75.02"(L) x 57.39"(W) x 92.34"(H)- withBase |
| | Without CEPH unit | 42.72"(L) x 57.39"(W) x 91.24"(H)- withoutBase |
| | | 42.72"(L) x 57.39"(W) x 92.34"(H)- withBase |

*The specifications are subject to change without prior notice.

DIMENSIONS [Unit: mm]



***An additional 3 inches (76.2 mm) of space is required behind the unit for wall mount bracket installation (mandatory unless there is a base mount installation).**

vatech



www.vatech.uk.com